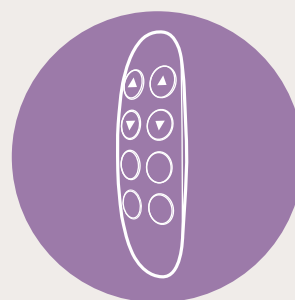


# COMPACT & POWERFUL LINEAR ACTUATOR SYSTEM

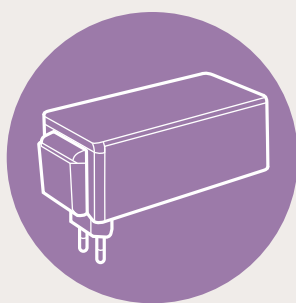
Wireless Direct Cut Solution - Make Your Design Out of Limitation



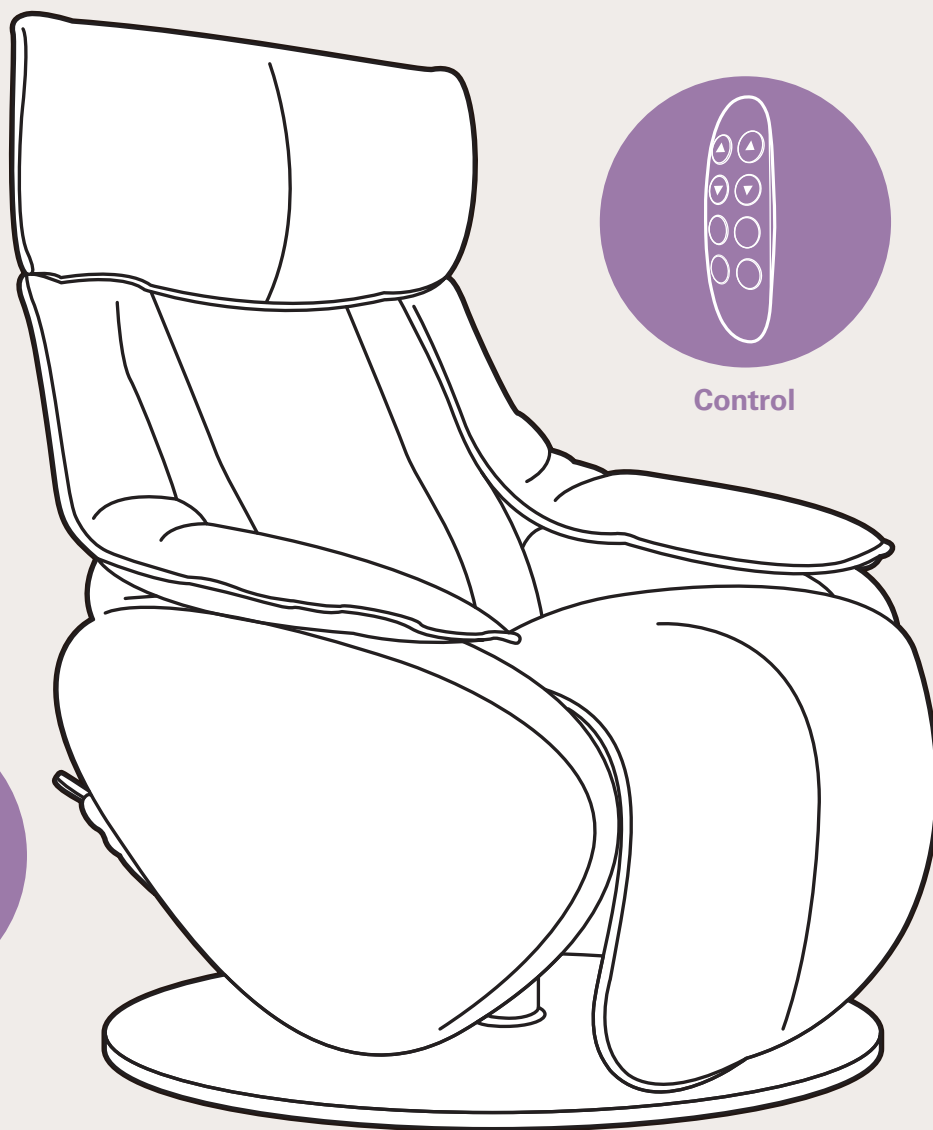
Actuator



Control



Power Supply



## Smooth & Powerful Movement Linear Actuator - TA38M & TA43

- Palm sized design (TA38M)
- Max load: 4,000N (TA43)

## Mobile Battery Solution Backup Battery - TBB8

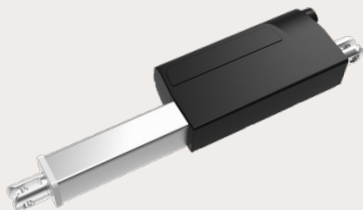
- Detachable battery
- Low standby power consumption

## Universal Charging Design Power Supply - TP11

- SMPS transformer
- Removable plug support

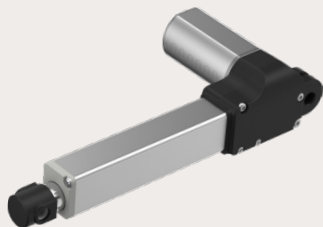
## Flexible Operation Control - TFH25

- Max Buttons: 8
- Wireless hand control



### TA38M

Voltage	12/24V DC; 12/24V DC (PTC)
Max. load	2,000N (push); 1,500N (pull)
Max. speed at max. load	6.2mm/s
Stroke	20~300mm
Retracted length	≥ 160mm
	(depending on chosen options)
Operational temperature range	+5°C~+45°C
Output signal	Hall sensors



### TA43

Voltage	24V DC; 24V DC (PTC)
Max. load	4,000N (push/pull)
Max. speed at max. load	2.5mm/s
Stroke	20~300mm
Retracted length	≥ Stroke + 100mm
Operational temperature range	+5°C~+45°C
Output signal	Hall sensors



### TBB8

Battery type	Lithium
Capacity	1.5Ah
Charging voltage	24~35V DC
Discharging voltage	24V DC, 1.5A
LED indication (for charge / discharge status)	
With built-in buzzer	
Low standby power consumption	
Detachable bracket	



### TP11

Transformer type	SMPS
Input voltage	100~240V AC
Max. output	29V DC, 1.8A
Plug support	EU, USA, AUS, UK
Options	Multiple wall mount plugs, backup battery



### TFH25

Max. available buttons	8
Wireless hand control, compatible with TRF (RF receiver)	



#### Europe

+33 (0)1 74 82 50 51  
sales.eu@timotion.com

#### Sales Office in Germany

+49 2241 148 79 05

#### Sales Office in Italy

+39 0362 288456